

# **Converting a Pixel Map to GDSII for High Resolution Masks**

**Steve DiBartolomeo  
Applications Manager  
831 426-6163  
info@artwork.com**

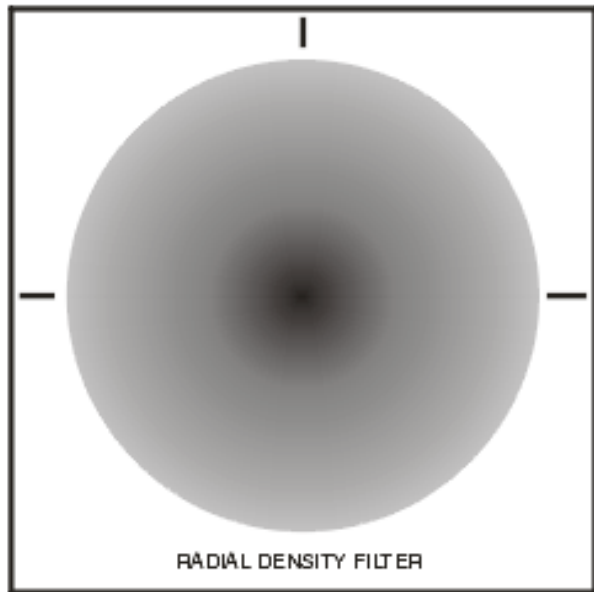
***ARTWORK CONVERSION SOFTWARE, INC***

## Introduction

The need to convert a “bitmapped” image to GDSII often arises when producing optical filters where the density is a function of x,y position on the filter.

For example, one may need to build a filter whose density decreases with distance from the center:

$$\text{density} = f(r - r_0)$$



Such an image could easily be rendered on a imagsetter similar to those used to make film for magazines - but the resolution might not be enough for laboratory quality since the smallest spot these imagesetters produce is about 10 um.

By using an eBeam or high resolution laserwriter one can easily get pixels in the 1/2 to 1/4 um range.

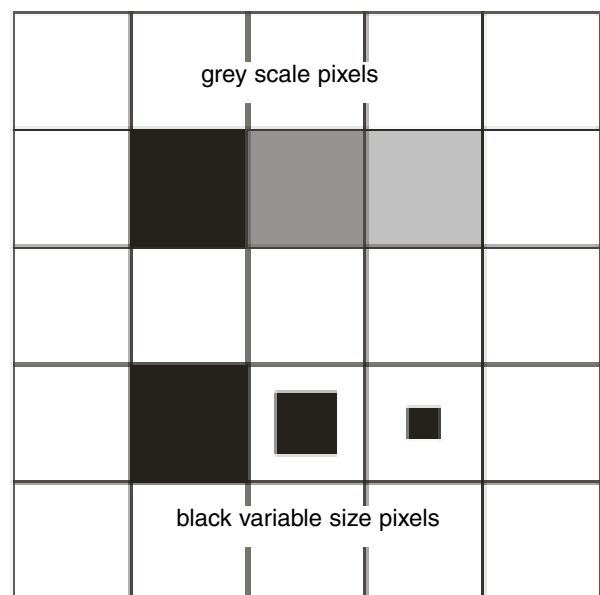
## Grey Scale

A grey scale filter is one whose density at any location can have a range of values: typically 256 steps from completely opaque (black) to completely clear. Since most mask making machines are designed to put down a high contrast spot, one must approximate the grey scale by creating a dot (which is much larger than the pixel size) and varying the size of the dot by building it from multiple pixels.

## Set Area Proportional to Density

In the illustration below you can see the the mask area has been divided into large square “dots.” If we could truly create a dot whose density was variable then our mask would look like the top row of dots.

Since we can't do that, we have to approximate the density by reducing the dot size so that the area of light it blocks is proportional to the density of the greyscale dot. That is, if we take the integral of the grey dot and take the integral of the smaller black dot the values are equal.



The problem is reduced to calculating the area of a black dot that is equivalent in transmission to the density of the grey scale pixel.

Then place the variable size dot at the center of each grid point.

## Size Independent

You can see that the actual size of dot and pixels are independent of the input data . In fact, the dot/grid size is selected from a variety of tradeoffs:

- smallest spot the eBeam or laser can produce.
- amount of data you are willing to generate.
- resolution needed by your application.
- dynamic range needed by your application.

## The Input File

There are many bitmap file formats - we have standardized on TIFF which itself has multiple internal variations. Most large TIFF files are compressed using either LZW compression or PackBits compression.

We only support two kinds of TIFF files - monochrome or grey scale.

## User Inputs

TIFF file name: radial-filter1.tif

100% Pixel size: 2 um

Grid Address Size: 0.125 um

Mode: BW or GreyScale

Levels of Grey: 256

Black = 0

Center Data at: 50000, 50000 um

---

For greyscale, we recommend that the pixel (or dot size as it is called in the printing industry) be a power of 2 in um. i.e. 1, 2, 4, 8, 16 .... um and that the pixel be evenly dividable by the grid.

i.e.

dot size = 4 um grid address=0.5 um **OK**

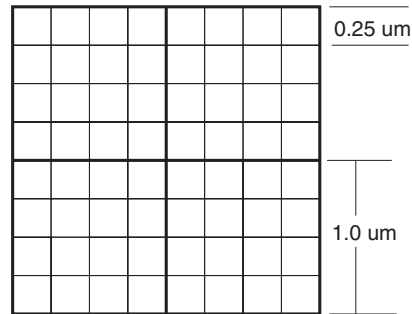
dot size = 10.3 um grid address = 0.5 um **NOT OK.**

## Grid Limitations of Imaging Machines

Virtually all IC imaging machines are grid based raster devices. Depending on the machine's capabilities the addressability of the data is 0.5, 0.25 or .125 um. This limits the mask designer's possible combinations of pixel size and dynamic range.

## Example

Consider the case where the designer sets up a pixel size of 1x1 um and the machine's grid address is 0.25 um. In

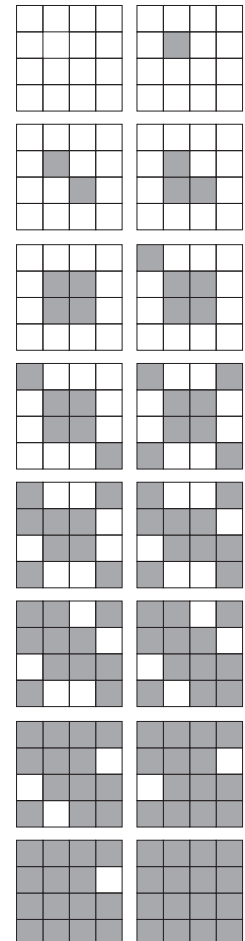


this case it is simply not possible to get 256 levels of grey. First of all, it is not possible to easily vary the spot size in the

center of the dot because pixels are snapped to grid. Secondly, one can only get 16 distinct levels of grey and the various dots will not be symmetric.

There are many ways to arrange the pixels within a dot to get the desired density - shown at right is one possible arrangement.

A lookup table can be built for the program that contains the pixel placement for each level of gray. This gives the mask designer more control should it be needed.

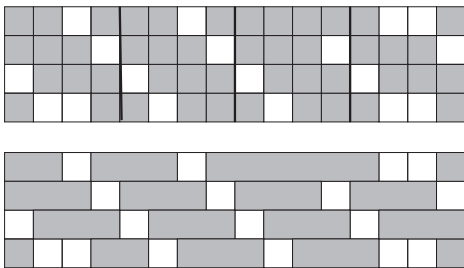


## Compression and Processing Time

IC imaging devices are capable of handling extremely large file sizes - so for a 1024 x 1024 image it is generally not critical to do much compression or optimization.

If the bitmap becomes quite large and has many levels of grey, the file size can get large and the processing time (the conversion from GDSII to MEBES for example) can also rise to the point where the mask cost will increase to reflect that.

One way to reduce the GDSII file size is to combine the individual pixels into larger rectangles when they are adjacent. This can significantly reduce the number of “rectangles” in the GDSII file and speeds up the GDSII to MEBES fracturing.



Top: Four adjacent pixels as created from the greyscale levels. There are 47 rectangles in the top file. Bottom: after combining adjacent sub pixels there are only 17 rectangles.

There are many possible compression schemes; for GDSII the one above is quite effective.

## Really Giant Files - MEBES

Should extremely large bitmaps that generate GDSII files in excess of 2GB be envisioned, we would recommend that rather than go to GDSII the program be modified to directly output MEBES.

## Custom Code

Artwork Conversion has been writing GDSII readers and writers since 1989 and has over 5000 licenses of our GDSII conversion tools in use. We can quickly take your requirements for converting bitmaps into GDSII (or even into MEBES) and produce a program that will quickly and effectively produce the mask data you need.

Our expertise extends into additional operations such as compression, viewing and plotting large data sets. We can offer code both on Windows and UNIX platforms.

Finally, if you are still in the early experimental stage we offer such conversions as a service.

For more information contact:

Steve DiBartolomeo  
Applications Manager  
Artwork Conversion Software, Inc.  
417 Ingalls St.  
Santa Cruz, CA 95060  
831 426.6163  
steve@artwork.com  
www.artwork.com